

---

**INDOOR / DOWNLIGHTS DE  
SUPERFICIE / QUADRO / QUADRO  
UP&DOWN**

**Código artículo 86.SD10.1301.01**

**LAVOV**  
L I G H T I N G



LED Ceiling light  
DOR/DOS

DOR450

DOR320

DOR260

DOR360

DOR300

DOS320

DOS260

DOS360

DOS300

IP54

Required Tools

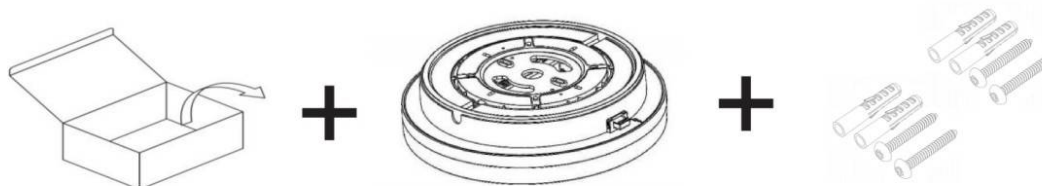
WARNING:

Check that the power is off before  
conducting any maintenance and  
assembly work

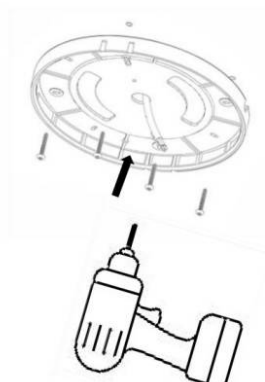
Caution,danger of electric shock

The installation and commissioning of the  
luminaire as well as any modification to the  
luminaire may only be performed by authorized  
personnel (qualified electrician).

Step:1



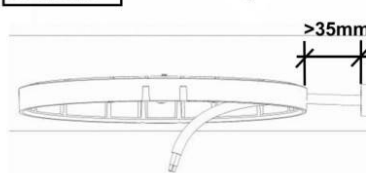
STEP:2



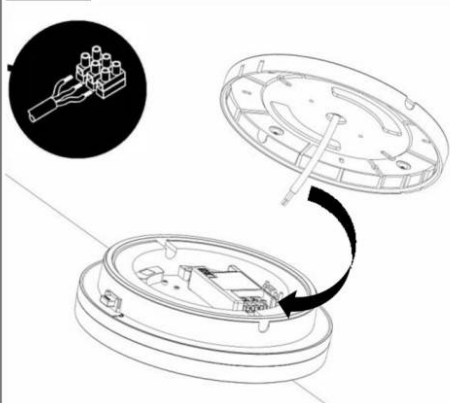
OPTION:A



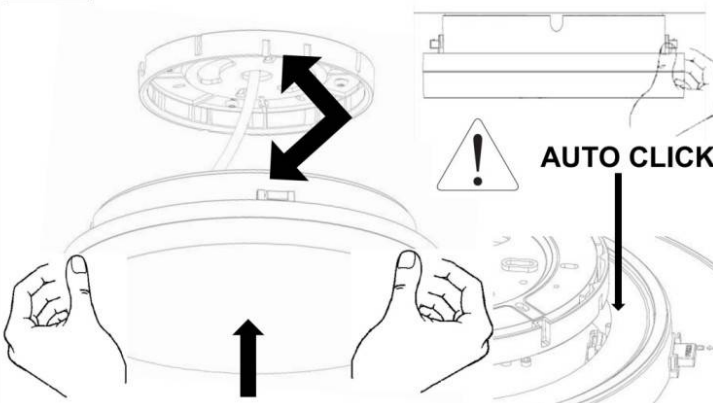
OPTION:B



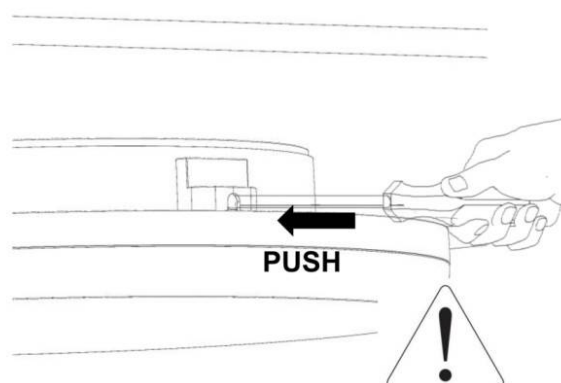
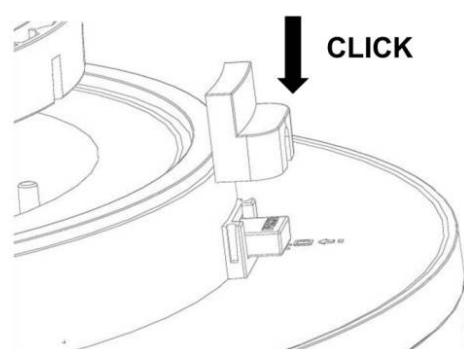
STEP:3



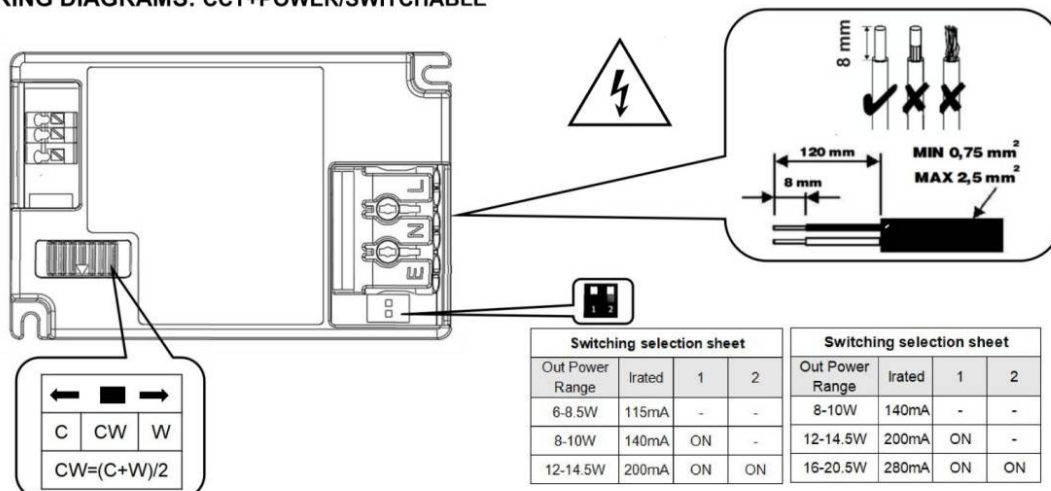
STEP:4



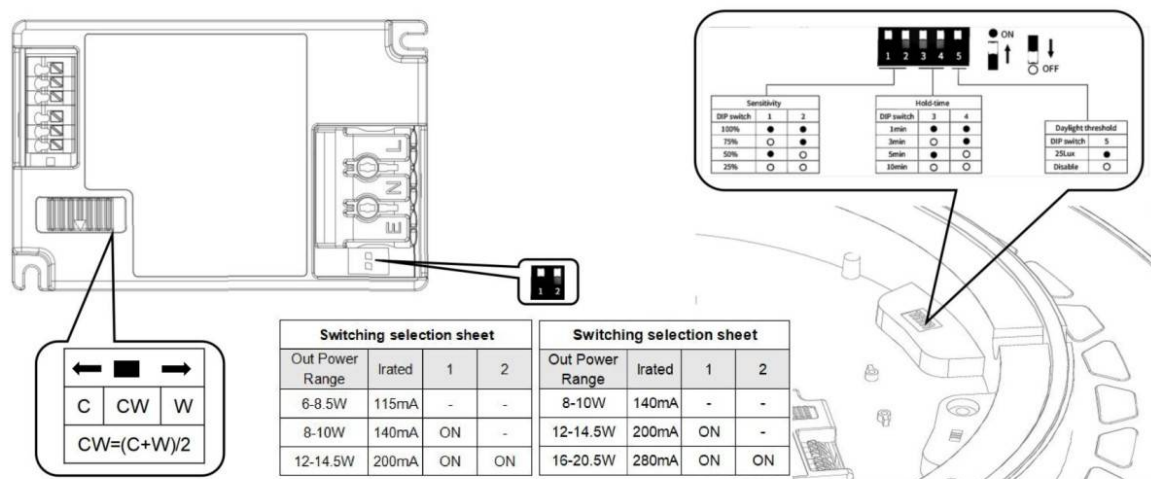
OPTION--SAFETY COVER



## I. WIRING DIAGRAMS: CCT+POWER/SWITCHABLE



## II. WIRING DIAGRAMS: CCT+POWER/SWITCHABLE+SENSOR/EM2



## III. WIRING DIAGRAMS: CCT+DALI (TCI DT6)

